

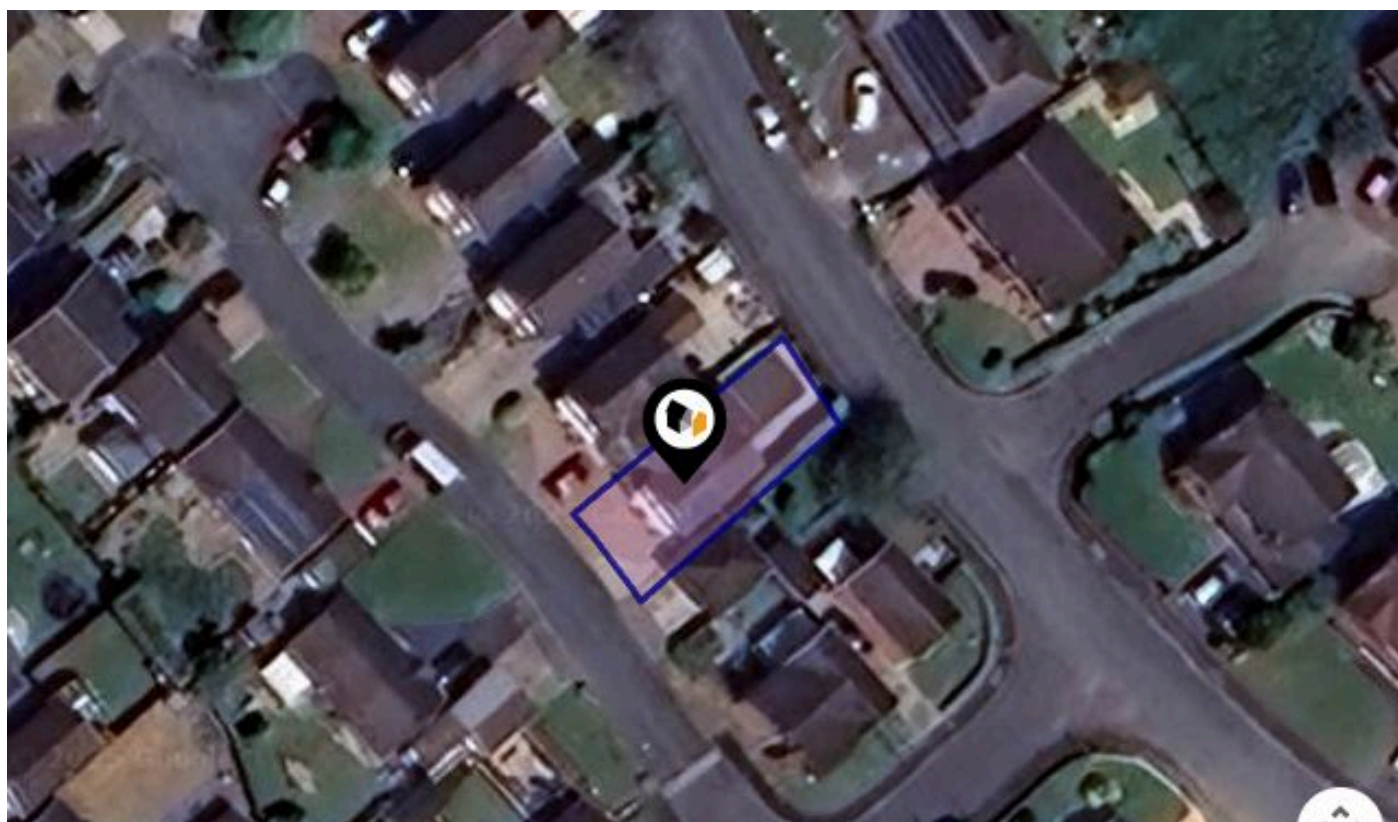


See More Online

KFB: Key Facts For Buyers

A Guide to This Property & the Local Area

Thursday 07th August 2025



KESTREL CLOSE, WINSFORD, CW7

butters john bee

6 Dingle Walk, Winsford, Cheshire, CW7 1BA

01606 514146

winsford@bjbmail.com




www.buttersjohnbee.com



Property

Type:	Semi-Detached House	Tenure:	Freehold
Bedrooms:	4		
Plot Area:	0.05 acres		
Year Built :	1976-1982		
Council Tax :	Band C		
Annual Estimate:	£2,126		
Title Number:	CH205374		

Local Area

Local Authority:	Cheshire west and chester	Estimated Broadband Speeds (Standard - Superfast - Ultrafast)		
Conservation Area:	No	8 mb/s	34 mb/s	8000 mb/s
Flood Risk:				
<div><div></div> Rivers & Seas</div>	Very low			
<div><div></div> Surface Water</div>	Low			
Mobile Coverage: (based on calls indoors)		Satellite/Fibre TV Availability:		
<div><div></div></div>	<div><div></div></div>	<div><div></div></div>	<div><div></div></div>	<div><div></div></div>
<div><div></div></div>	<div><div></div></div>	<div><div></div></div>	<div><div></div></div>	<div><div></div></div>

Planning History

This Address

Planning records for: *Kestrel Close, Winsford, CW7*

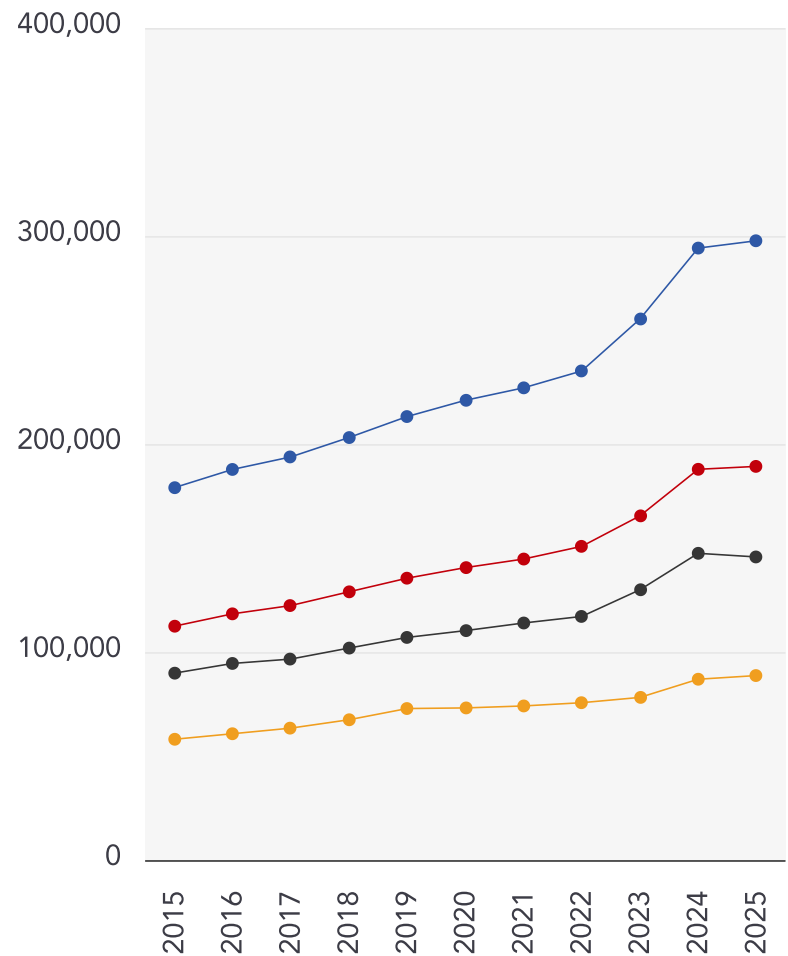
Reference - APP/2003/1671	
Decision:	Approved
Date:	20th October 2003
Description:	SINGLE STOREY REAR EXTENSION

Reference - 4/31016	
Decision:	Approved
Date:	16th July 1996
Description:	LINKED 2-STOREY EXTENSION TO FORM GARAGE, DINING ROOM AND BEDROOM

Market

House Price Statistics

10 Year History of Average House Prices by Property Type in CW7



Detached

+66.29%

Semi-Detached

+68.31%

Terraced

+62.15%

Flat

+52.7%

Important - Please Read

These particulars do not constitute any part of an offer or contract. All statements in these details are made without liability on the part of butters john bee or the seller.

They should not be relied upon as a statement or representation of fact and, although believed to be correct, are not guaranteed and form no part of an offer or contract. Any intending buyers must satisfy themselves as to their correctness.

Please note that all appliances and heating systems are not tested by butters john bee and therefore no warranties can be given as to their good working order.

butters john bee

Data Quality

We are committed to comprehensive property data being made available upfront to make the home buying and selling process quicker, easier and cheaper. This is why we have partnered with Sprift, the UK's leading supplier of property-specific data.



Contains public sector information licensed under the Open Government License v3.0

The information contained within this report is for general information purposes only.

Sprift Technologies Ltd aggregate this data from a wide variety of sources and while we endeavour to keep the information up to date and correct, we make no representations or warranties of any kind, express or implied, about the completeness, accuracy, reliability, of the information or related graphics contained within this report for any purpose.

Any reliance you place on such information is therefore strictly at your own risk. In no event will we be liable for any loss or damage including without limitation, indirect or consequential loss or damage, or any loss or damage whatsoever arising from loss of data or profits arising out of, or in connection with, the use of this report.

butters john bee^{bjb}

butters john bee

6 Dingle Walk, Winsford, Cheshire, CW7

1BA

01606 514146

winsford@bjbmail.com

www.buttersjohnbee.com



Valuation Office
Agency

