

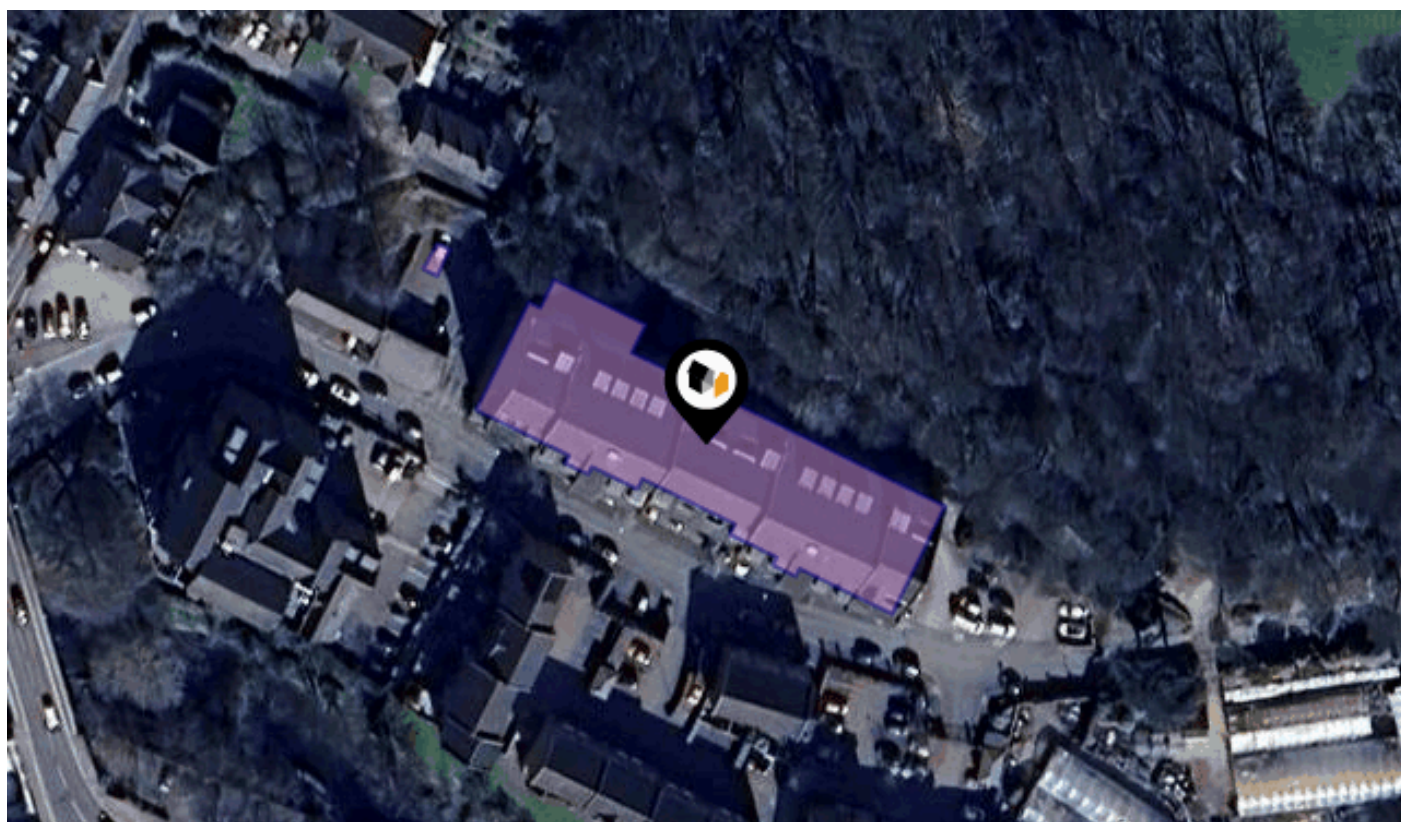


See More Online

KFB: Key Facts For Buyers

A Guide to This Property & the Local Area

Wednesday 06th August 2025



MILL GREEN, CONGLETON, CW12

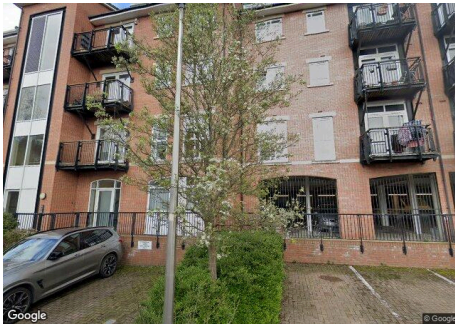
butters john bee

43 High Street, Congleton, Cheshire, CW12 1AU

01260 280000

congleton@bjbmail.com

www.buttersjohnbee.com



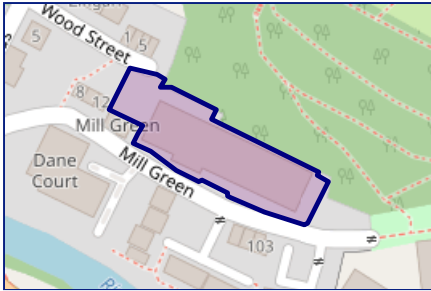
Property

Type:	Flat / Maisonette	Tenure:	Leasehold
Bedrooms:	1	Start Date:	26/07/2006
Floor Area:	527 ft ² / 49 m ²	End Date:	01/01/3004
Plot Area:	0.38 acres	Lease Term:	999 years from 1 January 2005
Year Built :	1996-2002	Term Remaining:	979 years
Council Tax :	Band B		
Annual Estimate:	£1,814		
Title Number:	CH557515		

Local Area

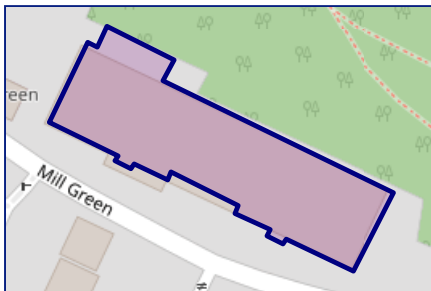
Local Authority:	Cheshire east	Estimated Broadband Speeds (Standard - Superfast - Ultrafast)		
Conservation Area:	No	14 mb/s	80 mb/s	1800 mb/s
Flood Risk:				
● Rivers & Seas	Low			
● Surface Water	Very low			
Mobile Coverage: (based on calls indoors)		Satellite/Fibre TV Availability:		

Freehold Title Plan



CH598940

Leasehold Title Plan

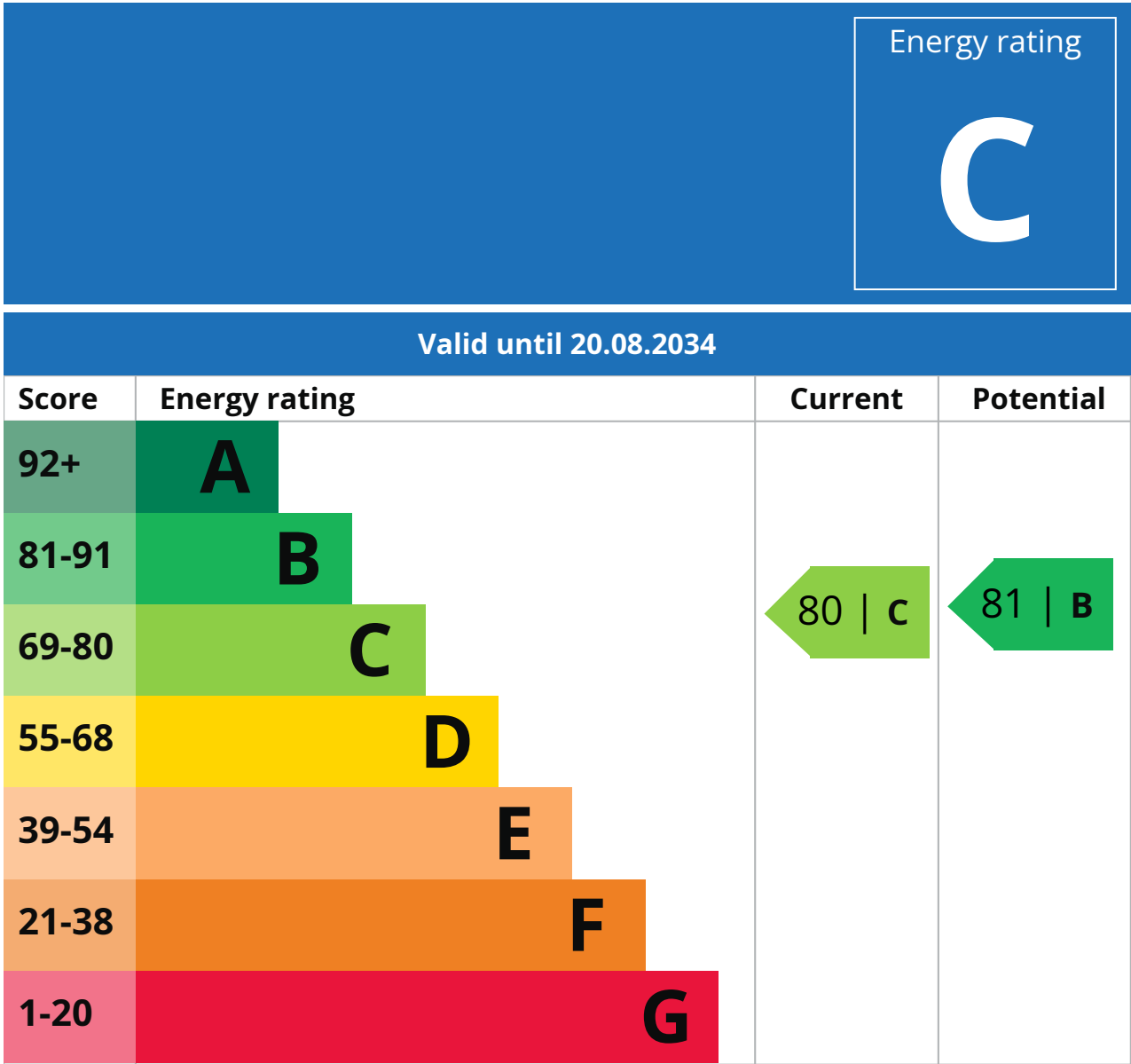


CH557515

Start Date:	26/07/2006
End Date:	01/01/3004
Lease Term:	999 years from 1 January 2005
Term Remaining:	979 years

Property

EPC - Certificate



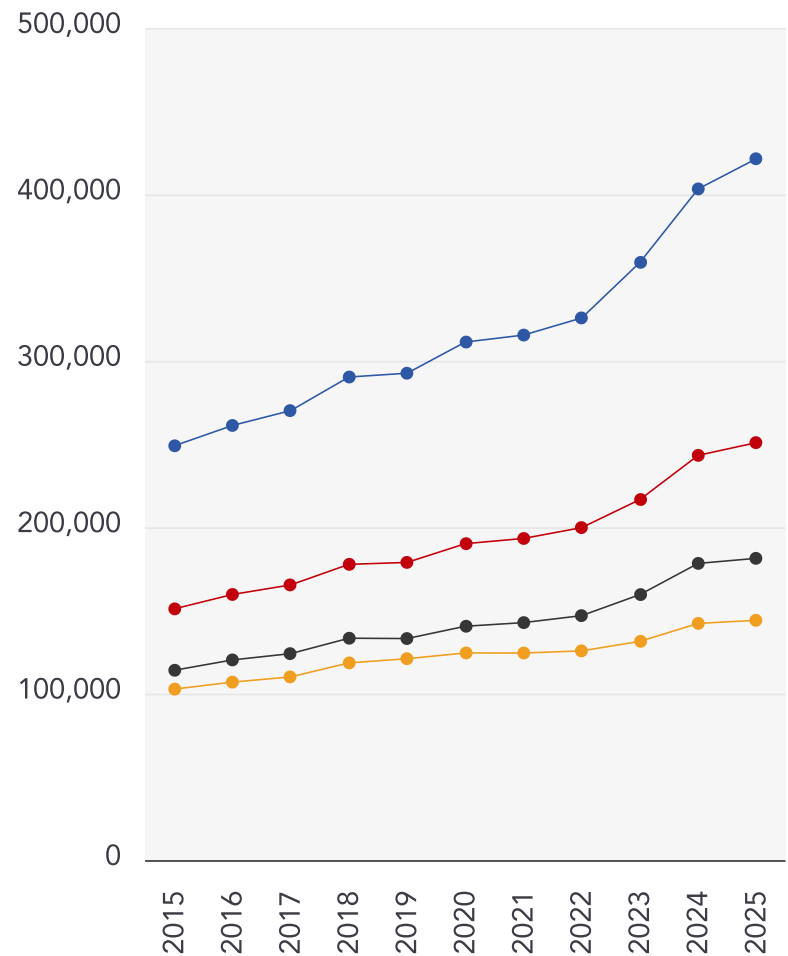
Additional EPC Data

Property Type:	Mid-floor flat
Flat Top Storey:	No
Top Storey:	0
Previous Extension:	0
Open Fireplace:	0
Walls:	Cavity wall as built insulated (assumed)
Walls Energy:	Good
Roof:	(another dwelling above)
Main Heating:	Boiler and radiators electric
Main Heating Controls:	Programmer room thermostat and TRVs
Hot Water System:	From main system
Hot Water Energy Efficiency:	Poor
Lighting:	Low energy lighting in 71% of fixed outlets
Floors:	(another dwelling below)
Total Floor Area:	49 m ²

Market

House Price Statistics

10 Year History of Average House Prices by Property Type in CW12



Detached

+69.27%

Semi-Detached

+66.15%

Terraced

+58.95%

Flat

+40.22%

Important - Please Read

These particulars do not constitute any part of an offer or contract. All statements in these details are made without liability on the part of butters john bee or the seller.

They should not be relied upon as a statement or representation of fact and, although believed to be correct, are not guaranteed and form no part of an offer or contract. Any intending buyers must satisfy themselves as to their correctness.

Please note that all appliances and heating systems are not tested by butters john bee and therefore no warranties can be given as to their good working order.

butters john bee

Data Quality

We are committed to comprehensive property data being made available upfront to make the home buying and selling process quicker, easier and cheaper. This is why we have partnered with Sprift, the UK's leading supplier of property-specific data.



Contains public sector information licensed under the Open Government License v3.0

The information contained within this report is for general information purposes only.

Sprift Technologies Ltd aggregate this data from a wide variety of sources and while we endeavour to keep the information up to date and correct, we make no representations or warranties of any kind, express or implied, about the completeness, accuracy, reliability, of the information or related graphics contained within this report for any purpose.

Any reliance you place on such information is therefore strictly at your own risk. In no event will we be liable for any loss or damage including without limitation, indirect or consequential loss or damage, or any loss or damage whatsoever arising from loss of data or profits arising out of, or in connection with, the use of this report.

butters john bee^{bjb}

butters john bee

43 High Street, Congleton, Cheshire,

CW12 1AU

01260 280000

congleton@bjbmail.com

www.buttersjohnbee.com



Valuation Office
Agency

